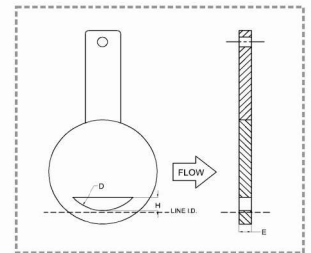
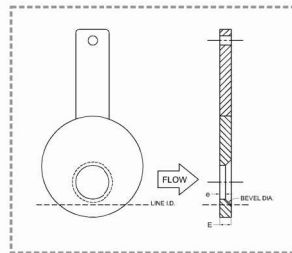
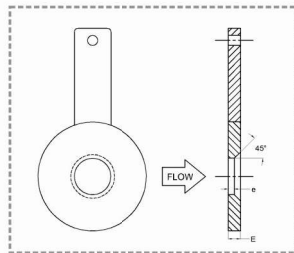
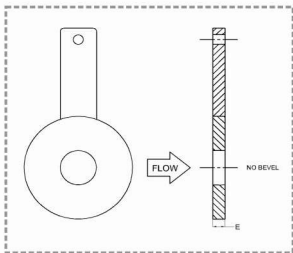




Orifice Plates

Orifice plates are widely used for flow measurement as they provide the simplest and the most economical means of flow detection. Orifice plates are available in the concentric type that the round opening (bore) of the orifice plate is positioned concentrically with the center of the pipe and the opening edge (bore edge) is available either in the concentric square edge type (sharp, square edge type) or in the quadrant edge type (round edge type). Orifice plates are also available in the eccentric type that the opening of the orifice is shifted from the center of the pipe. They also are available in the segmental type that the opening is a circular segmental segment and the orifice is comparable to a partially opened gate valve.



ORIFICE BORE TYPE

Concentric Square Edged Orifice
 Quadrant Edged Orifice
 Eccentric Orifice
 Segmental Orifice

FLANGE RATINGS

JIS 10, 16, 20, 30, 40, 63
 ANSI Class 150, 300, 600, and 900, 1500, 2500

PLATE THICKNESS

3, 6, 9, 12mm

PLATE MATERIAL

Per ASME recommendations
 Non-standard: Monel, Hastelloy B/C, Titanium etc.

MARKINGS

Upstream side of tab handle stamped "UPSTREAM" and with bore type and size, line size, tag number

FLOW CALCULATION STANDARDS

ISO 5167
 AGA report #3
 ASME MFC-3M (R.W Miller)

PRESSURE TAPS

Flange taps
 Corner taps
 D and 1/2D (Radius) taps
 Pipe taps
 Vena contract taps

TAB HANDLE

Integral with Orifice Plate
 Welded to orifice plate

DRAIN AND VENT HOLE

Standard: 304SS, 316LSS
 Not drilled for orifice bores smaller than 25.4mm

NOMINAL PIPE SIZE

2" to 24"

